

# *Increasing Yield with SmartFactory Rx & PI System*

DeShawn Jordan, Janssen Supply Chain,  
Ashley Howard, Applied Materials, Global Strategic Accounts

# Agenda

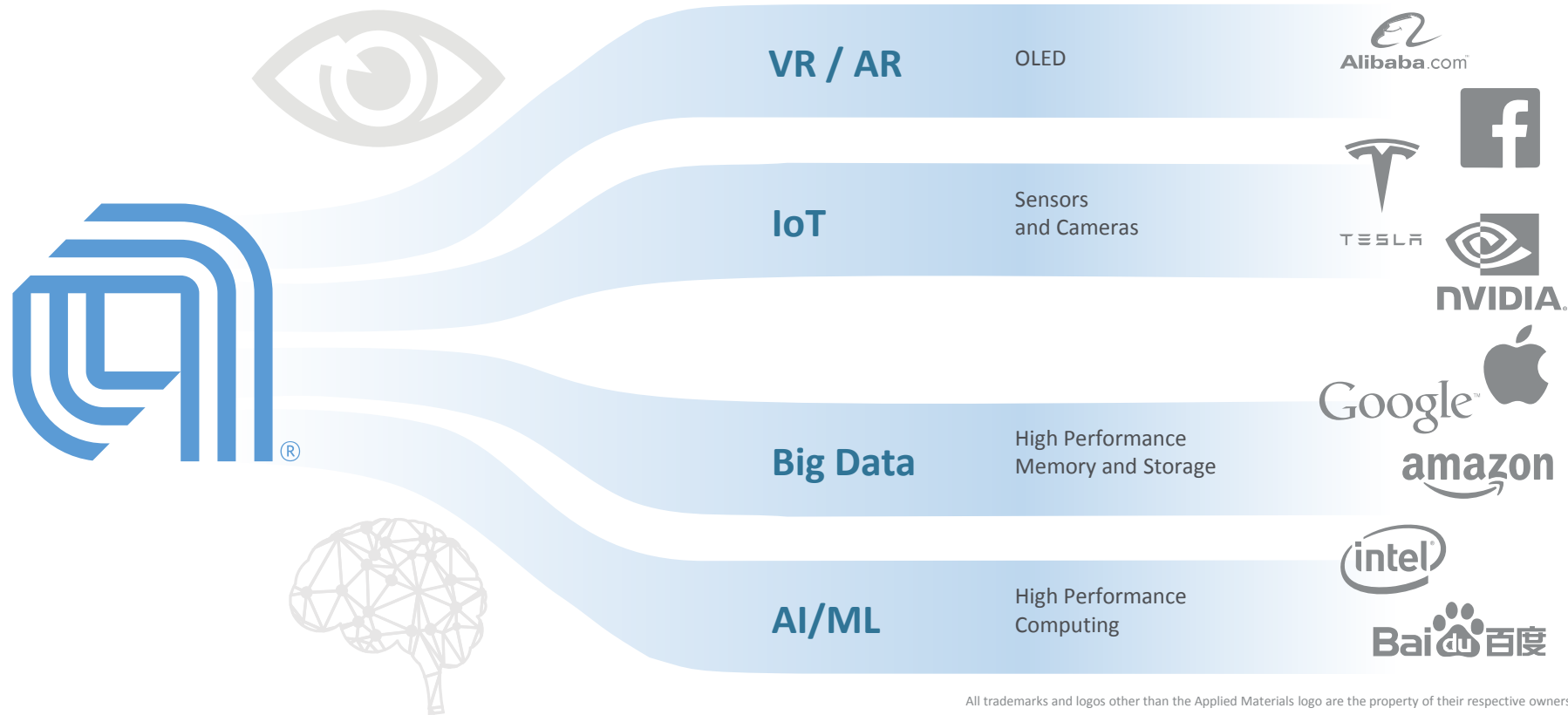
- Introduction
  - Applied Materials Pharma: SmartFactory Rx
  - Janssen Vacaville
- Challenges with Yield
- Looking to Semi-Conductor Manufacturing
- Janssen's Project with Applied
- Partnering for the Future

# Applied Materials:

Our innovations **make possible**  
the technology shaping the future



# Applied is At the Foundation of Emerging Trends



All trademarks and logos other than the Applied Materials logo are the property of their respective owners

# SmartFactory Rx

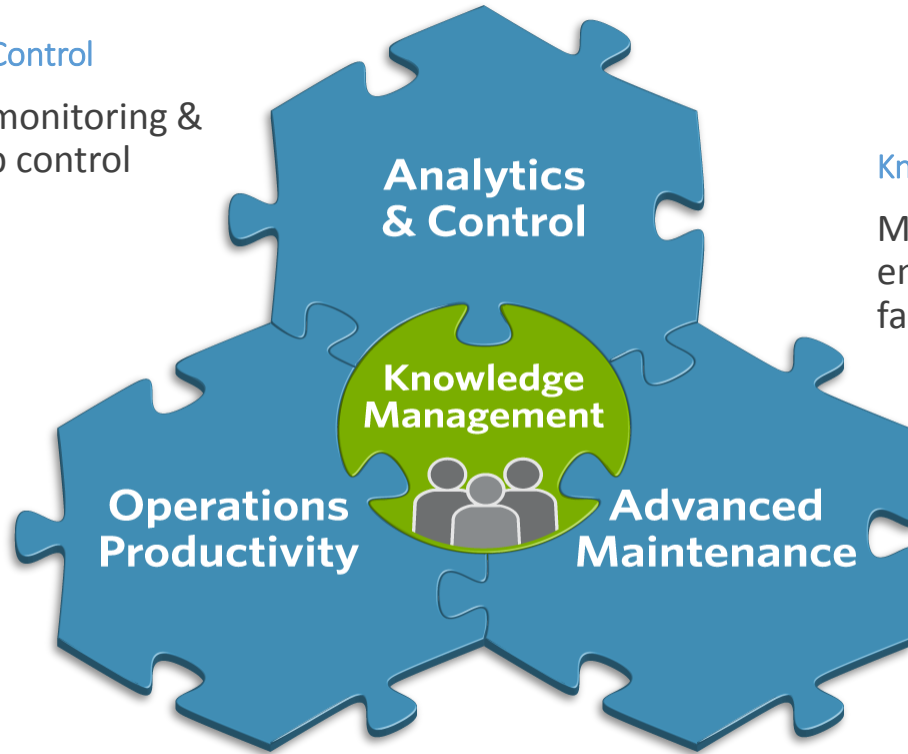
*A synergistic suite of software solutions – unparalleled*

## Analytics & Control

Real-time monitoring & closed loop control

## Knowledge Management

Manage Knowledge with emphasis on human factors in engineering



## Operations Productivity

Planning & scheduling

## Advanced Maintenance

Determines best time for service



# Smart Manufacturing Vision with Industry 4.0

Leveraging a rich and growing algorithmic base

## Big Data Infrastructure

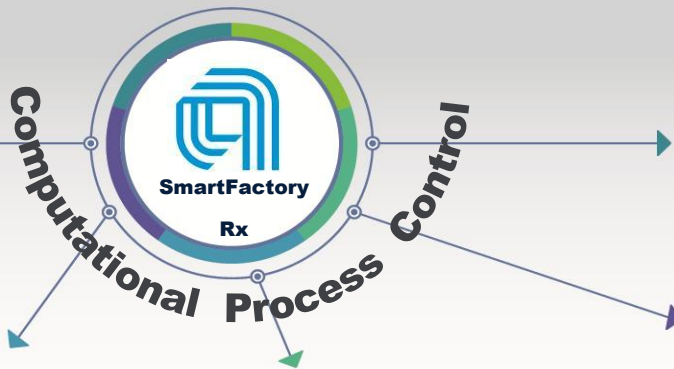
- Hadoop-based systems
- Big Data migration systems (RDBMS + BD)
- On-line (analysis) and off-line solution components

## Enhanced Analytics

- Data quality enhancement methods
- Next Generation FDC (NG-FDC, auto feature recognition and parameterization)
- Trace data auto analysis
- Yield excursion analysis
- Wafer topography analysis
- Digital thread
- Crawlers

## Prescriptive Analytics

- State-based modeling such as HMM



## Cloud Computing

- Cloud-based analytics capability with data partitioning / IP security guarantees
- Interface to fab-level capabilities
- 3rd party participation mechanism

## Predictive Analytics

- R2R Control / MPC
- Predictive Maintenance (PdM)
- Virtual Metrology (VM)
- Virtual Sensing / Advanced sensors
- MTTR Reduction with VM+R2R
- Predictive Scheduling
- Yield Prediction (YP)
- YP with feedback to control and scheduling

## Integration

- Data aggregation methods
- Vertical integration from sensor through ERP
- Horizontal integration across the fab at SCADA and MES levels
- Supply chain integration and optimization

## Digital Twin

- Real-time Scheduling/Dispatch for rule-based digital-twin
- Equipment and process modeling and simulation
- System modeling and simulation
- Integration to supply chain
- Real-time simulation update for digital twin realization
- Play forward capability at all levels

Algorithm roadmap to support move from reaction, to prediction to prescription, leveraging CPC

Janssen Vacaville:  
Transforming Our World Delivering affordable medicines to  
anyone, anywhere, any day




# Janssen's Challenge



Tablet  
Scrap

Yield





## Semiconductor to Pharma

Quality, Efficiency, Lower Costs

80% - 90% (High)

OEE

10% - 60% (Low)

5 $\sigma$  - 6 $\sigma$  (High)

Process Capability

2 $\sigma$  - 3 $\sigma$  (Low)

5 - 10 Days

Production Lead Time

120 - 180 Days

5 - 50 Days

FG Inventory

60 - 90 Days

Low

Direct / Indirect Labor  
Ratio

High

# Increasing Compression Yield

## Business Challenge

- Need to increase yield on Press
- Minimal data integration: Process environmental, LIMS, CQA, maintenance

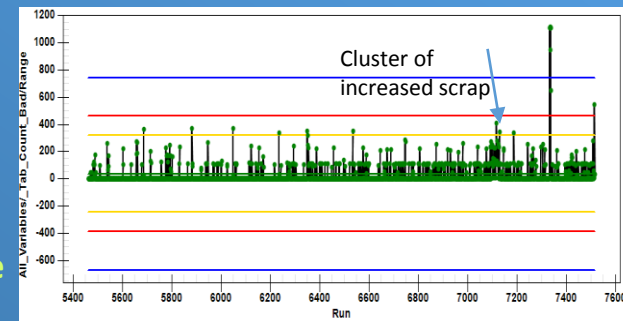
## Solution

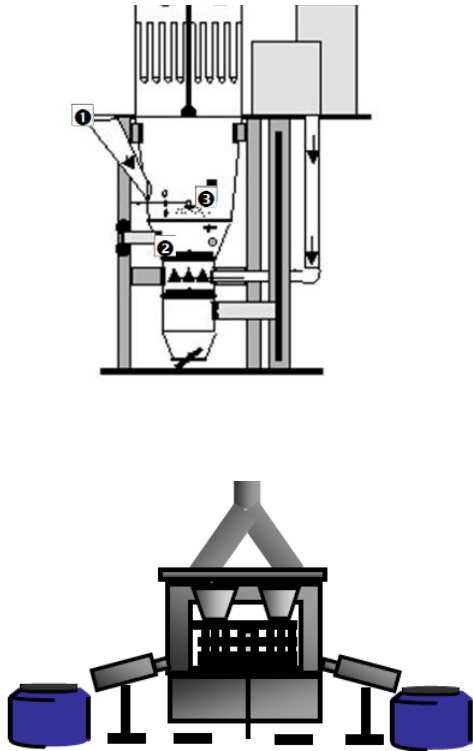
- Integrate data contributing for yield
- Strategy for managing process and maintenance interaction
- Analytics to monitor, control, and improve process understanding
- Both MVA and UVA statistical process control methods to reduce tablet scrap
- Operator Dashboard: Green means **GOOD!**
- Prescriptive corrective action

## Results

- Deliver actionable insights to shop floor
- Improve process robustness
- Workflows in place to increase yield
- Minimize process variability with run to run control

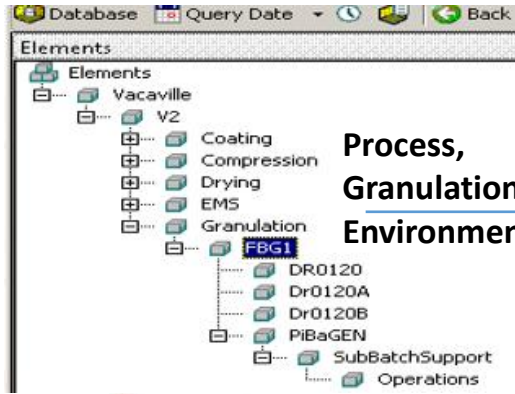
**Yield Improvement  
Estimated 1.5% year 1**





# Getting started

- Minimal end to end electronic data to support analysis
  1. Integrate
  2. Run 40 batches
  3. Model/Analyze
  4. Prescriptive Action
- Mechanistic modelling approach
  - Process expert driven modelling
  - Identify optimum settings for monitoring process health

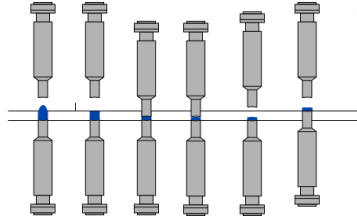


**Process,  
Granulation &  
Environmental Data**

**Maintenance Data**

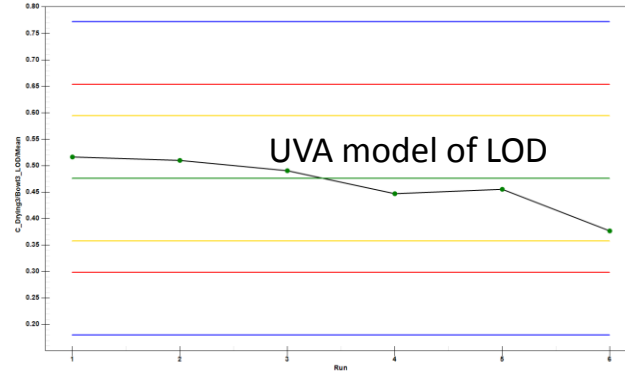


**LIMS**

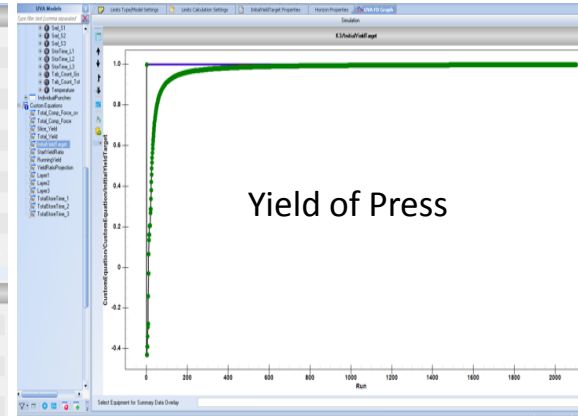
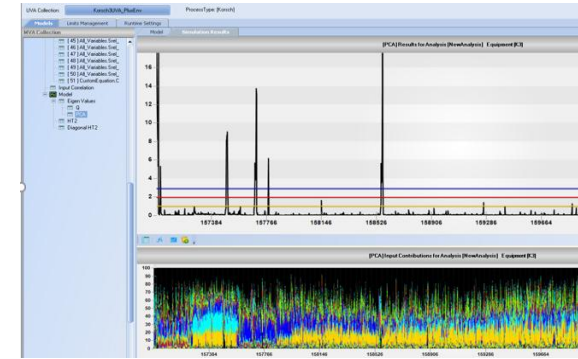


**Press  
Data**

## UVA/MVA Models Granulation



## UVA/MVA Models Compression

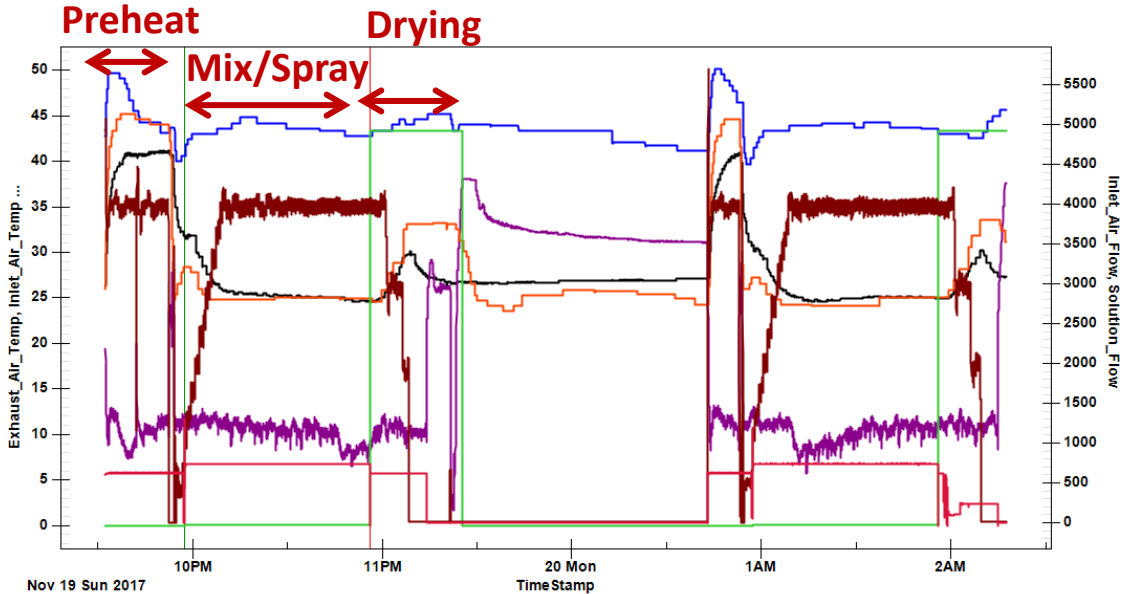
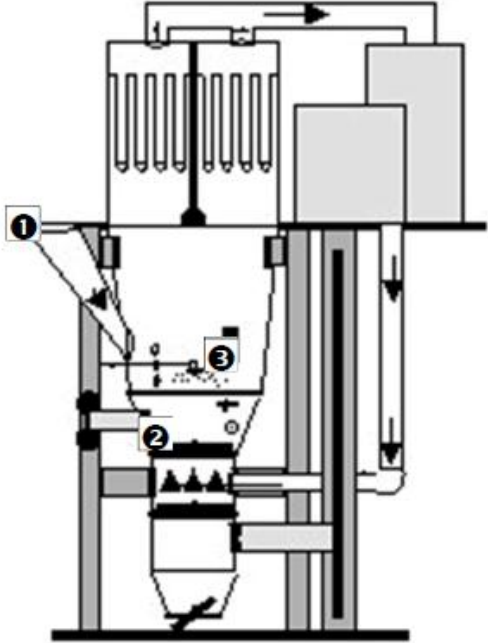


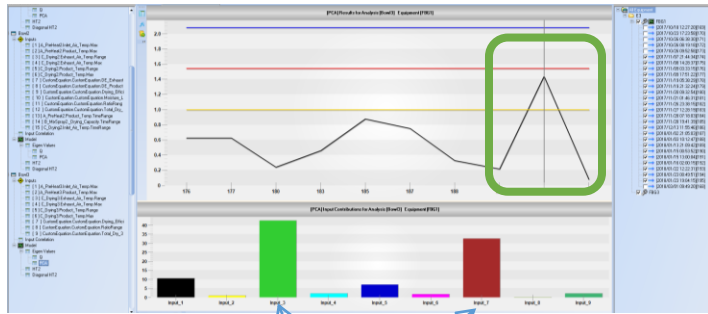


# Creating windows of analysis using PI Event Frames

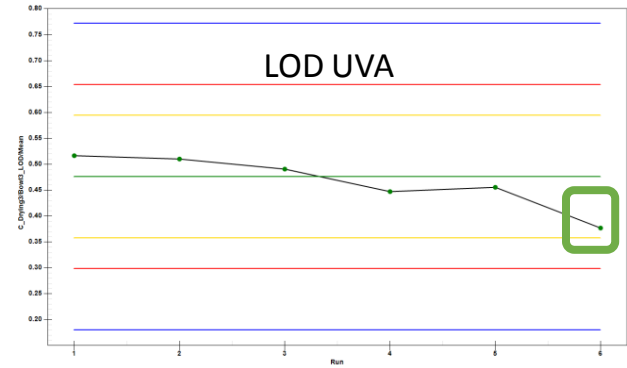
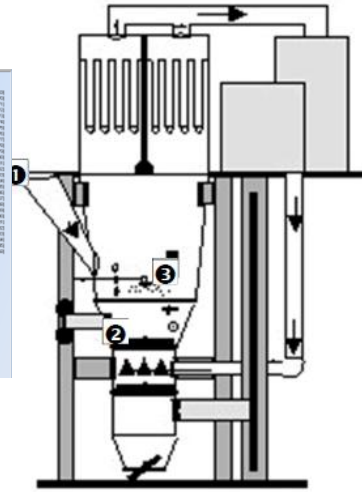
- Upstream process health critical at understanding press performance

Granulator Process





Contributors to outlier




# Mechanistic Hybrid Modelling Example: Granulator

Overview

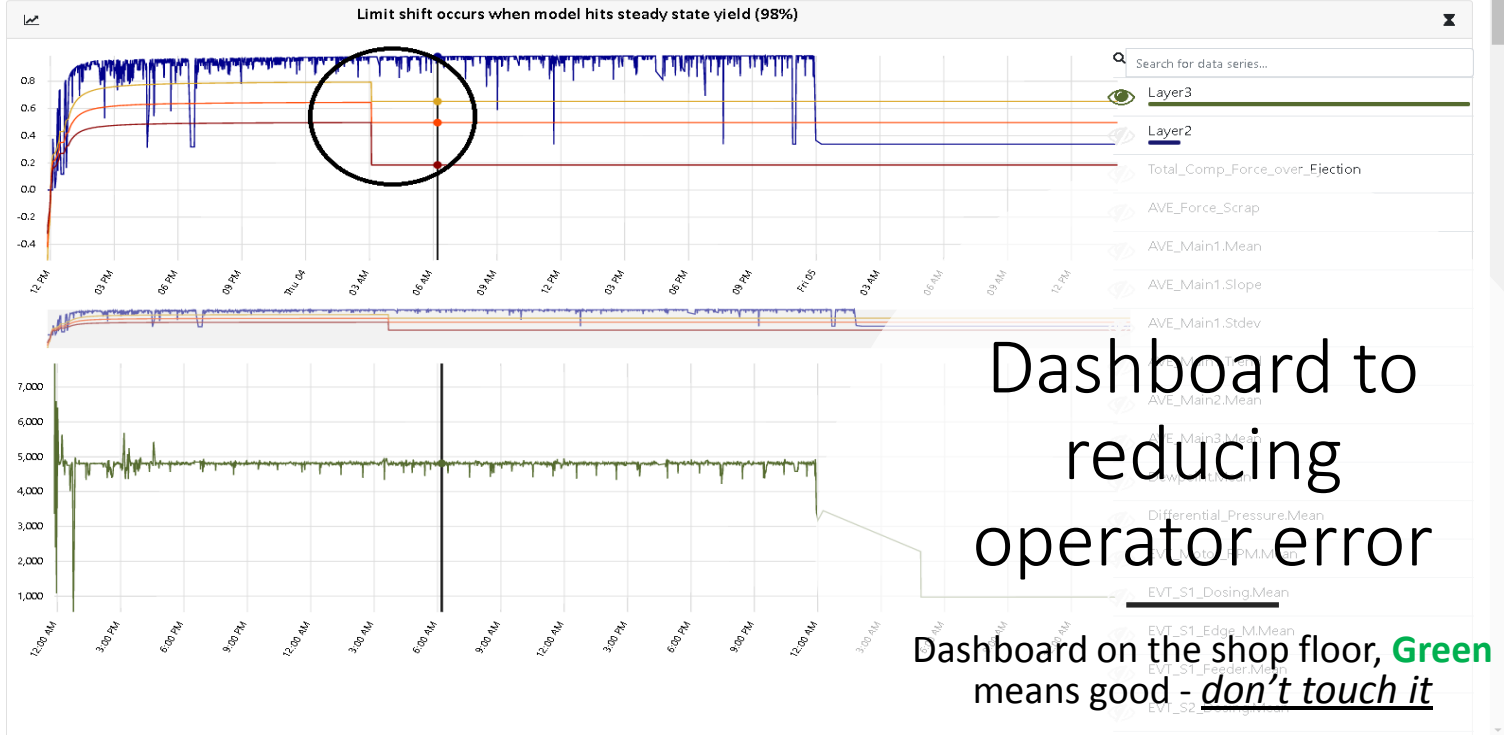
Run: 1  
 Batch: 1710207  
 Equipment: K3 - Korsch Tablepress  
 Recipe: C54  
 Product: Concerta

Start Time: Jan 3, 2018, 11:52:00 AM  
 Duration: 2d 2h 20m 0s  
[Follow Live](#)

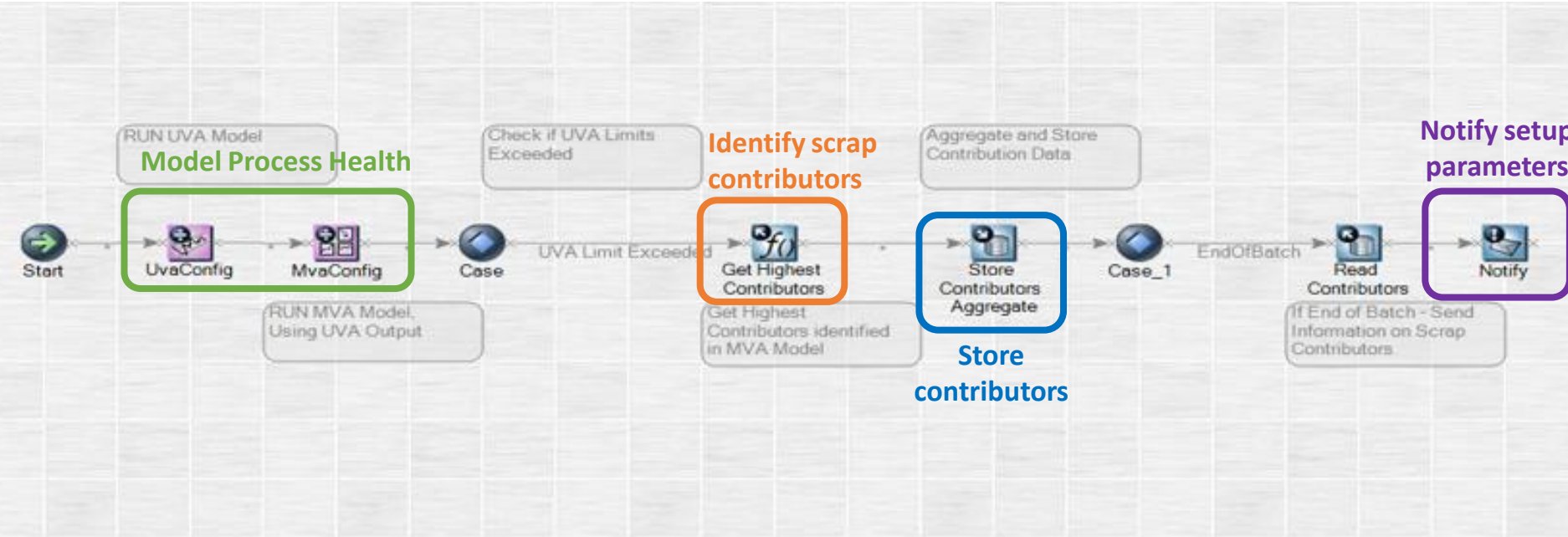
Live Mode to monitor real time  
 RunningYield ☰



Highcharts.com



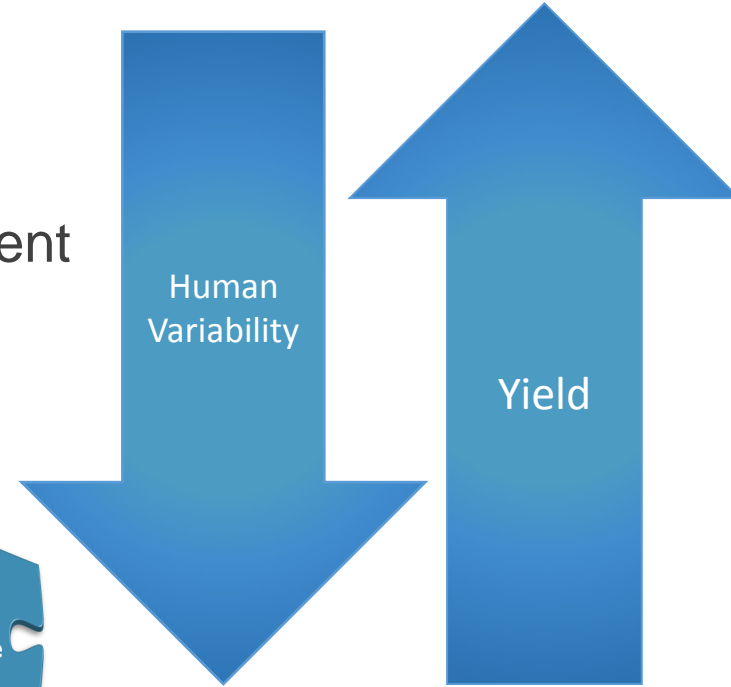
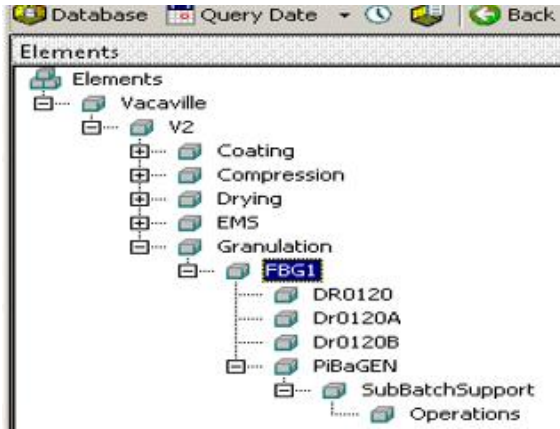
# Delivering Prescriptive Action for Maximum Yield





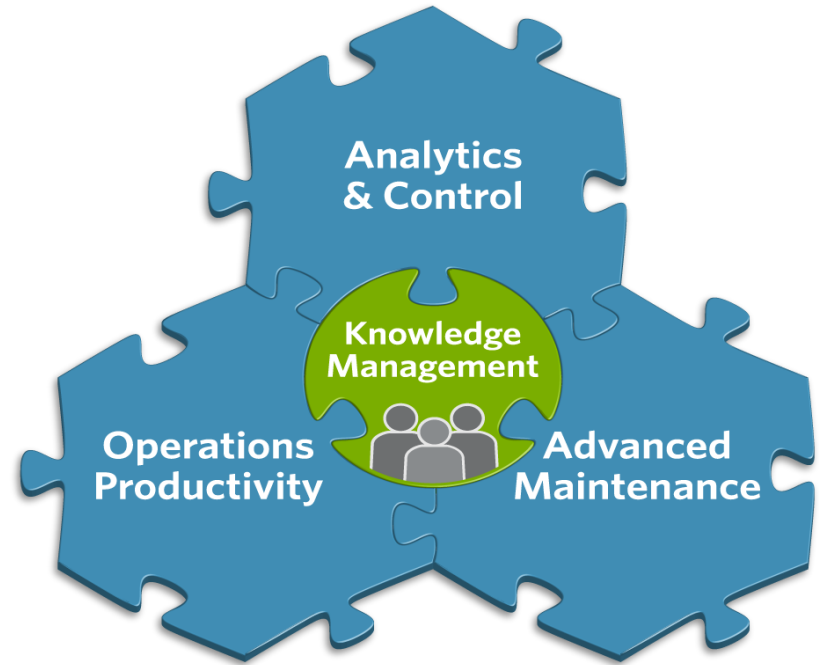
# Janssen, Applied & OSIsoft: Partnering for success

- Integrate Equipment to PI
- Expand PI AF to new Equipment
- Expanding SmartFactory Rx to other equipment



# Expanding SmartFactory Rx

- Analytics on all granulation and tablet presses
- Maintenance predictions on tooling
- Optimize site scheduling practices
  - Realtime scheduling



# Questions

Please wait for the **microphone** before asking your questions



State your **name & company**

# Please remember to...

Complete the Online Survey for this session



**Download the Conference App for OSISOFT Users Conference 2017**

- View the latest agenda and create your own
- Meet and connect with other attendees



search **OSISOFT** in the app store

# Thank you

- **Speaker's Name**
- [email@company.com](mailto:email@company.com)
- Speaker's Title
- Company Name
  
- **Speaker's Name**
- [email@company.com](mailto:email@company.com)
- Speaker's Title
- Company Name